



杭州钱星机械进出口有限公司

Hangzhou Qianxing Machinery Import & Export Co., Ltd

Mutton Cloth Knitting Machine

Attn: Lois Gu
Email: info@knitmill.com
Mobile: +86-150 6814 1608



<https://knitmill.com/>



PREFACE

Hangzhou Qianxing Machinery Import & Export Co., Ltd is a combo of manufacturer and exporter of knitting machines and knitted fabric, can produce both mutton cloth knitting machine and mutton cloth, we have rich experience in this area. The sizes of mutton cloth can be made as per customers' requirements in rolls with different weight, such as 400g, 800g, etc.

Mutton cloth is also called stockinette, stockinette roll, etc.

Welcome to contact Lois for more details.



<https://knitmill.com/>





Technical Parameters

Model	Cylinder Dia. (mm)	Feeders	Capacity (m/h)	Power (kw)	N.W. (kgs)	G.W. (kgs)	PKG Size (cm)	PKG Vol. (cbm)
QJY-WD-173	173 (6.5")	14	45-55	0.75	220	280	100x70x135	0.945
QJY-WD-210	210 (7.9")	17	50-60	0.75	300	350	113x93x135	1.419
QJY-WD-236	236 (8.9")	19	60-70	0.75	300	350	113x98x145	1.606
QJY-WD-280	280 (10.7")	21	65-75	1	300	350	93x113x150	1.576
QJY-WD-355	355 (13.7")	28	85-95	1	350	400	125x115x145	2.084
QJY-WD-445	445 (17.2")	25	80-90	1	425	475	125x143x145	2.592
QJY-WD-445	445 (17.2")	33	100-105	1	425	475	125x143x145	2.592

01 Cams with Scale



The machine is applied new cams with dial, it can help to adjust the fabric density much easier and accurate.



02 Self-oil Feeder



The machine is applied new type oil adding device, it will automatically supply the oil to the machine directly and no need air compressor to provide air.



New
Development

Photos

There are 2 options of the machine, for the diameter 335mm and 445mm, will use side creel. The small diameter will use top creel, please see below:

Model: QJY-WD-236 (*Top creel*)



Model: QJY-WD-445 (*Side creel*)



Photos

There are 2 options of the machine, for the diameter 335mm and 445mm, will use side creel. The small diameter will use top creel, please see below:

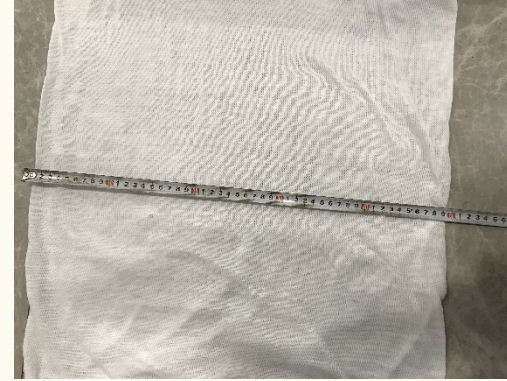
Made by model *QJY-WD-236*



Material: Cotton 58 tex (10S, Ne10)
Width: 30cm



Made by model *QJY-WD-445*



Material: Cotton 58 tex (10S, Ne10)
Width: 50cm



01

This machine applies pure cotton to knit tube bags, medical bandage or stockinette. It adopts transducer to adjust cylinder running speed then regulate knitting rate.

The machine has slow-start function which also can change knitting speed at random. It is not only helping the new machine grind in, but also conducive to observed the machine running conditions and product quality situation.

03

It is equipped with positive yarn feeder, which can make the feeding speed more smoothly, decrease the rate of yarn-breaking and defective index.

It also can guarantee the products quality at the same time.

Key spare parts like cylinder and inner sinker are made from good steel, reliable and durable.

<https://knitmill.com/>

02

04

Introductions

Of

Mutton Cloth Knitting Machine

THANKS

Attn: Lois Gu

Email: info@knitmill.com

Mobile: +86-150 6814 1608